

**APRIL -MAY 2024**



**ELLWOOD CITY K 12 BREAKFAST MENU**



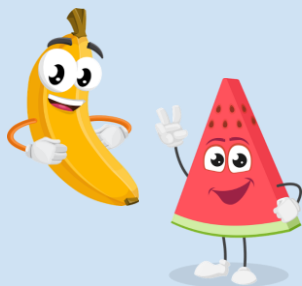
**What is a Meal?**

You must choose the following components for a qualified breakfast.

- ★ Minimum of 1/2 cup serving of fruit must accompany a reimbursable breakfast.
- ★ Minimum of 2 grains or 1 grain and 1 meat or meat alternate
- ★ Choice of Milk - 1% white and chocolate

**Featured Fruit May Include:**

Oranges, Apples, Bananas, Grapes, Pears, Peaches, Cantaloupe, Melon, Strawberries, Applesauce, Pineapple, Mandarin Oranges, 100% fruit juices, And More!!



**DAILY ALTERNATES**

Choice of Assorted Cereals with Mini Loaf or Popart, Benefit Bars, Uncrustables with cheese stick and more!

**Breakfast Prices:**

Student: Free  
Reduced: Free  
Adult: \$2.40

**General Manager:**

**Phone Number:**  
724-752-1591 Ext. 3020  
**Email:**  
metz@ecask12.org

**USDA IS AN EQUAL OPPORTUNITY EMPLOYER**

**ALL MENU ITEMS ARE SUBJECT TO CHANGE DUE TO AVAILABILITY**

Brand or equivalent foods offered/milk options defined



Monday	Tuesday	Wednesday	Thursday	Friday
<b>April-1</b>	<b>April-2</b>	<b>April-3</b>	<b>April-4</b>	<b>April-5</b>
<b>NO SCHOOL</b>	<b>Entrée</b>	<b>Entrée</b>	<b>Entrée</b>	<b>Entrée</b>
	Funnel Cake (Pre K Cereal)	Sausage Egg Cheese on a WG Croissant	Pancakes w/ Bacon	Homemade Frosted Donut (Pre K Cereal)
	<b>Featured Selections</b>	<b>Featured Selections</b>	<b>Featured Selections</b>	<b>Featured Selections</b>
Assorted 100% Fruit Juice Assorted Fruits Assorted Canned Fruit Choice of Milk	Assorted 100% Fruit Juice Assorted Fruits Assorted Canned Fruit Choice of Milk	Assorted 100% Fruit Juice Assorted Fruits Assorted Canned Fruit Choice of Milk	Assorted 100% Fruit Juice Assorted Fruits Assorted Canned Fruit Choice of Milk	Assorted 100% Fruit Juice Assorted Fruits Assorted Canned Fruit Choice of Milk
<b>April-8</b>	<b>April-9</b>	<b>April-10</b>	<b>April-11</b>	<b>April-12</b>
<b>Entrée</b>	<b>Entrée</b>	<b>Entrée</b>	<b>Entrée</b>	<b>Entrée</b>
Belgian Waffle w/ Sausage	Mini Cini Rolls (Pre K Cereal)	Bacon Egg Cheese Maple Waffle Flatbread	Scrambled Egg, Bacon w/WG Toast	Homemade Frosted Donut (Pre K Cereal)
<b>Featured Selections</b>	<b>Featured Selections</b>	<b>Featured Selections</b>	<b>Featured Selections</b>	<b>Featured Selections</b>
Assorted 100% Fruit Juice Assorted Fruits Assorted Canned Fruit Choice of Milk	Assorted 100% Fruit Juice Assorted Fruits Assorted Canned Fruit Choice of Milk	Assorted 100% Fruit Juice Assorted Fruits Assorted Canned Fruit Choice of Milk	Assorted 100% Fruit Juice Assorted Fruits Assorted Canned Fruit Choice of Milk	Assorted 100% Fruit Juice Assorted Fruits Assorted Canned Fruit Choice of Milk
<b>April-15</b>	<b>April-16</b>	<b>April-17</b>	<b>April-18</b>	<b>April-19</b>
<b>Entrée</b>	<b>Entrée</b>	<b>Entrée</b>	<b>Entrée</b>	<b>Entrée</b>
Pancake Wrap	Breakfast Burritos	Apple Frudel (Pre K Cereal)	Sausage Egg Cheese on a WG Croissant	Homemade Frosted Donut (Pre K Cereal)
<b>Featured Selections</b>	<b>Featured Selections</b>	<b>Featured Selections</b>	<b>Featured Selections</b>	<b>Featured Selections</b>
Assorted 100% Fruit Juice Assorted Fruits Assorted Canned Fruit Choice of Milk	Assorted 100% Fruit Juice Assorted Fruits Assorted Canned Fruit Choice of Milk	Assorted 100% Fruit Juice Assorted Fruits Assorted Canned Fruit Choice of Milk	Assorted 100% Fruit Juice Assorted Fruits Assorted Canned Fruit Choice of Milk	Assorted 100% Fruit Juice Assorted Fruits Assorted Canned Fruit Choice of Milk
<b>April-22</b>	<b>April-23</b>	<b>April-24</b>	<b>April-25</b>	<b>April-26</b>
<b>Entrée</b>	<b>Entrée</b>	<b>Entrée</b>	<b>Entrée</b>	<b>Entrée</b>
Banana or Blueberry Bread	Bacon, Egg & Cheese Bagel	Assorted Muffins	Scrambled Eggs, Sausage Patty w/WG Toast	Homemade Frosted Donut (Pre K Cereal)
<b>Featured Selections</b>	<b>Featured Selections</b>	<b>Featured Selections</b>	<b>Featured Selections</b>	<b>Featured Selections</b>
Assorted 100% Fruit Juice Assorted Fruits Assorted Canned Fruit Choice of Milk	Assorted 100% Fruit Juice Assorted Fruits Assorted Canned Fruit Choice of Milk	Assorted 100% Fruit Juice Assorted Fruits Assorted Canned Fruit Choice of Milk	Assorted 100% Fruit Juice Assorted Fruits Assorted Canned Fruit Choice of Milk	Assorted 100% Fruit Juice Assorted Fruits Assorted Canned Fruit Choice of Milk
<b>April-29</b>	<b>April-30</b>	<b>May-1</b>	<b>May-2</b>	<b>May-3</b>
<b>Entrée</b>	<b>Entrée</b>	<b>Entrée</b>	<b>Entrée</b>	<b>Entrée</b>
Pancakes w/Sausage Links	Soft Bagel w/ Strawberry Filling (Pre K Breakfast Pizza)	French Toast Sticks w/ Bacon	Sausage, Egg & Cheese Maple Flatbread	Homemade Frosted Donut (Pre K Cereal)
<b>Featured Selections</b>	<b>Featured Selections</b>	<b>Featured Selections</b>	<b>Featured Selections</b>	<b>Featured Selections</b>
Assorted Fruits Assorted Canned Fruit Choice of Milk	Assorted 100% Fruit Juice Assorted Fruits Assorted Canned Fruit Choice of Milk	Assorted 100% Fruit Juice Assorted Fruits Assorted Canned Fruit Choice of Milk	Assorted 100% Fruit Juice Assorted Fruits Assorted Canned Fruit Choice of Milk	Assorted 100% Fruit Juice Assorted Fruits Assorted Canned Fruit Choice of Milk
<b>May-6</b>	<b>May-7</b>	<b>May-8</b>	<b>May-9</b>	<b>May-10</b>
<b>Entrée</b>	<b>Entrée</b>	<b>Entrée</b>	<b>Entrée</b>	<b>Entrée</b>
Waffles w/ Bacon	Assorted Pastries	Scrambler (hashbrown, eggs, cheese, & sausage)	Bacon Egg Cheese Bagel	Homemade Frosted Donut (Pre K Cereal)
<b>Featured Selections</b>	<b>Featured Selections</b>	<b>Featured Selections</b>	<b>Featured Selections</b>	<b>Featured Selections</b>
Assorted 100% Fruit Juice Assorted Fruits Choice of Milk	Assorted 100% Fruit Juice Assorted Fruits Choice of Milk	Assorted 100% Fruit Juice Assorted Fruits Choice of Milk	Assorted 100% Fruit Juice Assorted Fruits Choice of Milk	Assorted 100% Fruit Juice Assorted Fruits Choice of Milk